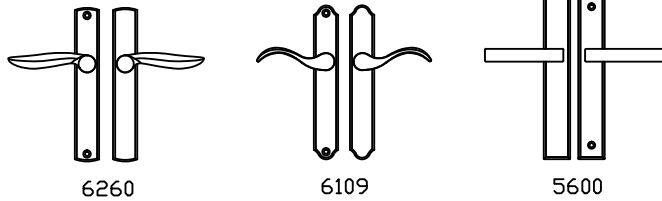


Swing Door Dummy Handle Set Installation Instructions



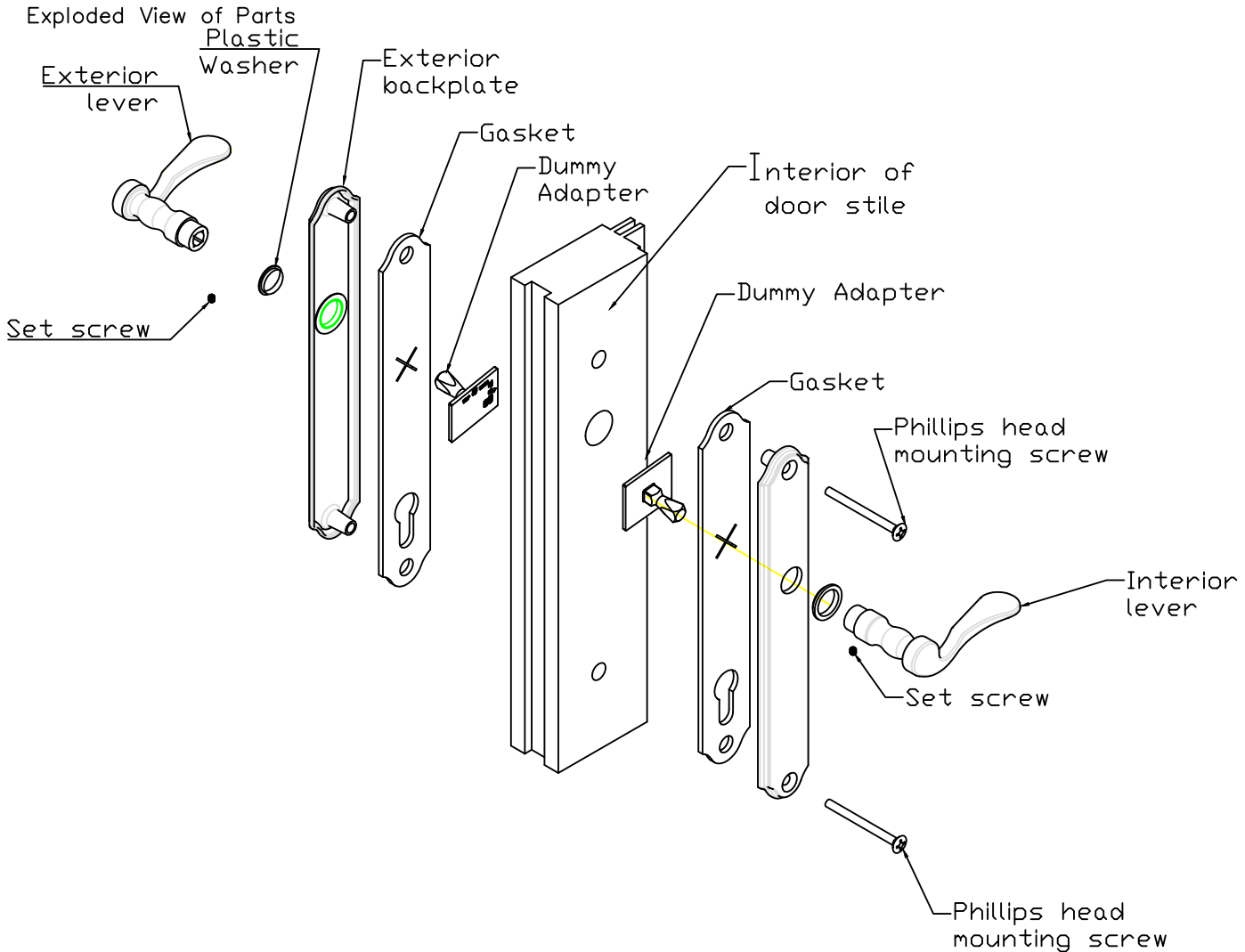
A Phillips screwdriver is required. Do NOT use power tools.

A Hex wrench for set screws is provided in the hardware package.

To prevent damage to the handle set while in construction phase, use a construction handle to operate the door. Lift to engage multipoint to close door. Push down to open the door. Construction handles are sold separately.

Use water to clean. Do not use brass cleaner as it will remove the protective coating.

Note: Handles and back plates vary by style but application is the same.



1. Apply the backplate gasket to the interior and exterior back plate. Push gasket firmly onto place to ensure a tight seal. Install the dummy adapter oriented as specified on the adapter (refer to the type of handle set 6260, 6109 or 5600), through the gasket, on each back plate. Apply interior and exterior back plates and fasten loosely with the two screws provided to compress the gasket as much as possible.
Note: The screw heads must be on the interior side of the door.
2. Install the handles (equipped with the plastic washer) onto the dummy adapters. Tighten the set screw while pushing the handle tight against the back plate. Screw until flush with handle.
3. Tighten the back plate screws