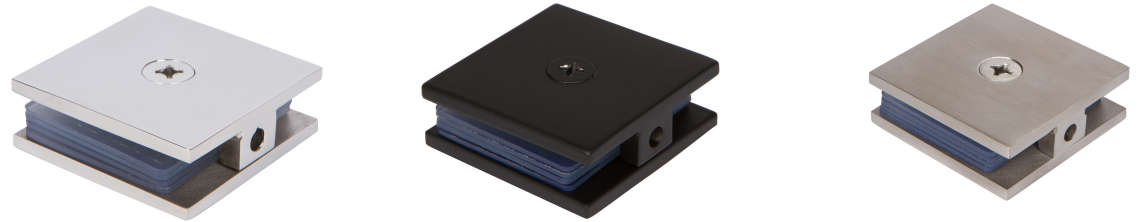
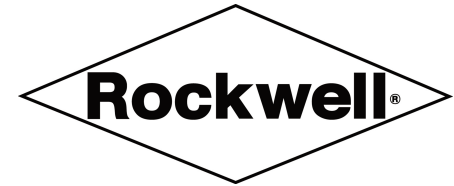


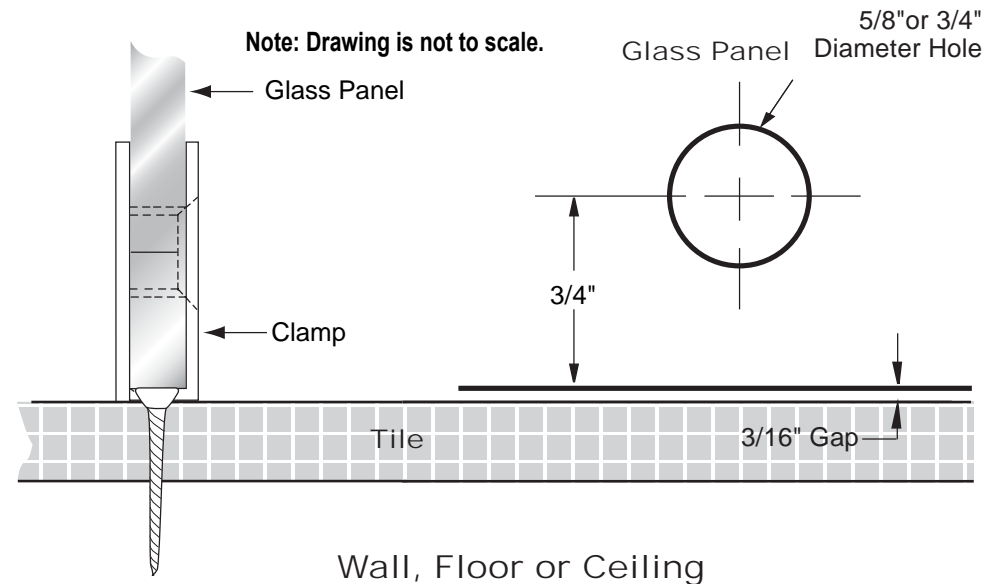
GLASS CLAMPS

Fixed Panel Square Clamp

Item No. **SDGC series**



TYPICAL INSTALLATION



Specifications:

Material: Stainless Steel or Solid Brass

Glass Thickness Range: 3/8" to 1/2"

Hole Size Required: 5/8" or 3/4"

Includes: Mounting Screws, gaskets, allen key